

THE PLANETARY SYSTEM

IDEAS, FORMULAS AND FORMS FOR A NEW CULTURE/CIVILIZATION

THE HIERARCHY

2024

info@theplanetarysystem.org

THE HIERARCHY

... Like milestones on a luminous path, the Brothers of Humanity, ever alert, are standing on guard, ready to lead the traveler into the chain of ascent.

Hierarchy is not coercion, it is the law of the Universe. It is not a threat, but the call of the heart and a fiery admonition directing toward the General Good.

Thus let us cognize the Hierarchy of Light.

How to transmute the most bitter into the most sweet? Naught save Hierarchy will transform life into a higher consciousness.

It is impossible to imagine a bridge into the Infinite, because a bridge is in need of abutments. But Hierarchy, like the abutments of a bridge, brings one to the shore of Light. And imagine the entire effulgence that the eyes behold! And understand the Song of Light.

Let us labor for Light and Hierarchy!

(Introduction "Hierarchy", Agni Yoga Series)



... The Hierarchy of Service is but the manifestation of the fulfillment of the Higher Will.

(Hierarchy § 42)

According to the esoteric Sources, a **Hierarchy** of *once* human and now higher Consciousnesses, referred to as Masters of Wisdom or Initiates, is guiding human and planetary evolution from the more 'subtle', interior, spiritual or divine worlds, as the higher levels of the Soul (*Group or solar Consciousness*) or of the Spirit (*planetary or cosmic Consciousness*) are defined.

A major Triad of *planetary Centres* – **Shamballa**, **Hierarchy** and **Humanity** – is thus indicated at the summit and at the helm of our planetary existence.

I. <i>The Shamballa energy</i>	Planetary head centre	First Ray	Will
The divine purpose.	Conditioning the life of nations.	Determining.	THE PLAN.
Expression:			
Sanat Kumara.	Politics. Esotericism.	New.	Destroys.
II. <i>Hierarchical energy</i>	Planetary heart centre	Second Ray	Love-Wisdom
Divine love-wisdom.	Conditioning the soul.	Inspiring.	
Expression:			
Buddha and Christ.	Religious. Spiritual.	Permanent.	Builds.
III. <i>Humanity's energy</i>	Planetary throat centre	Third Ray	Intellect
Divine intelligence.	Conditioning the mind.	Creative.	
Expression:			
Many people today.	Educational.		

Excerpt from: A. A. Bailey, *The Externalisation of the Hierarchy*, p. 89

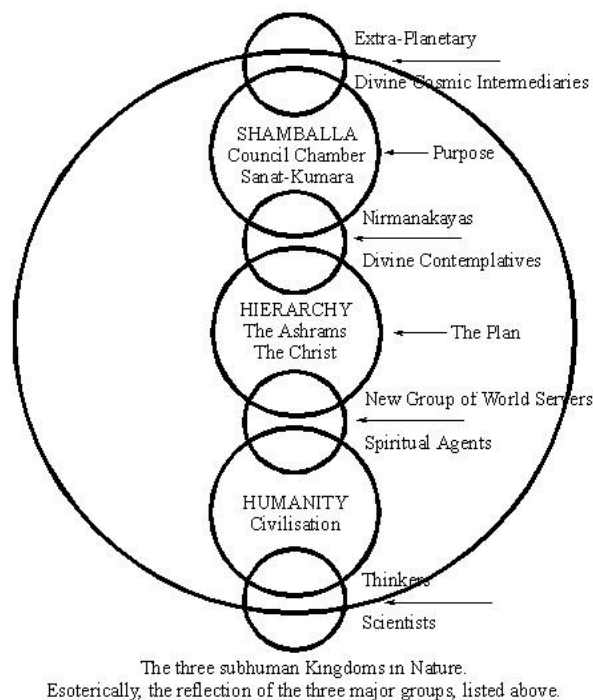
They are the main *transmission Agents* of the 3 main Energies or Rays of Aspect:

- **Shamballa**-Will-Power (1st Ray) – *solar Lives*,
- **Hierarchy**-Love-Wisdom (2nd Ray) – *planetary Lives*,
- **Humanity**-Creative Intelligence (3rd Ray) – *human Lives*.

“...the contributing factor, therefore, within and upon our planet is what we might regard as the *three major centres* of the planetary Logos:

1. The Head Centre, the dynamic Agent of the extra-planetary Purpose, the expression of the divine planetary Will as focussed in Shamballa. This is the energy of Synthesis, the source of all planetary life; it connotes essential Being.
2. The **Heart Centre**, the Agent of the Plan of evolution. This is the expression of divine Love or pure Reason, the **Hierarchy**. It is essentially the energy of Attraction, the kingdom of souls.
3. The Throat Centre, the Agent of all the three Aspects in relation to the three subhuman kingdoms in nature, the expression also of the divine Intelligence, Humanity. This is the energy of active Mind and makes humanity the macrocosm of the microcosm, the three subhuman kingdoms. Humanity is to these kingdoms what the Hierarchy is to the fourth kingdom in nature, the human kingdom.” (A. A. Bailey, *Telepathy and the Etheric Vehicle*, p. 125)

Here is the triadic System of *transmission Agents* of Life and of the Evolution of Consciousness of our Planet:



From: A. A. Bailey, *Discipleship in the New Age II*, p. 214

Founding of the Hierarchy

A triangle of celestial influences produced with its activity “the manifestation of **Hierarchy**—the intermediary between Shamballa and Humanity: Scorpio, Sirius and Mars. These, in relation to our Earth, produce the four streams of energy (initiating and transmitting) which lead humanity towards discipleship and initiation. When the work of all these triangles has been concluded, humanity (and in a mysterious sense our Earth) will be functioning in perfect rhythm and will respond to the energies pouring in from Alcyone.” (A. A. Bailey, *Esoteric Astrology*, p. 483) **Scorpio, Sirius and Mars** are “the major controlling influences whereby the *cosmic Christ* (the Second Person of the Trinity, the Soul/Consciousness aspect) works upon the *Christ principle* in the solar system, in the planet (through the **Hierarchy**), in man and in the lower forms of life expression.” (A. A. Bailey, *Esoteric Astrology*, p. 197)

“In Lemurian days, after the great descent of the spiritual Existences to the earth, the work They planned to do was systematised. Offices were apportioned, and the processes of evolution in all the departments of nature were brought under the conscious wise guidance of this initial Brotherhood. This **Hierarchy** of Brothers of Light still exists, and the work goes steadily on. They are all in physical existence, either in dense physical bodies, such as many of the Masters employ, or in *etheric bodies*, such as the more exalted helpers and the Lord of the World occupy. It is of value for men to remember that They are in physical existence, and to bear in mind that They exist upon this planet with us, controlling its destinies, guiding its affairs, and leading all its evolutions on to an ultimate perfection.

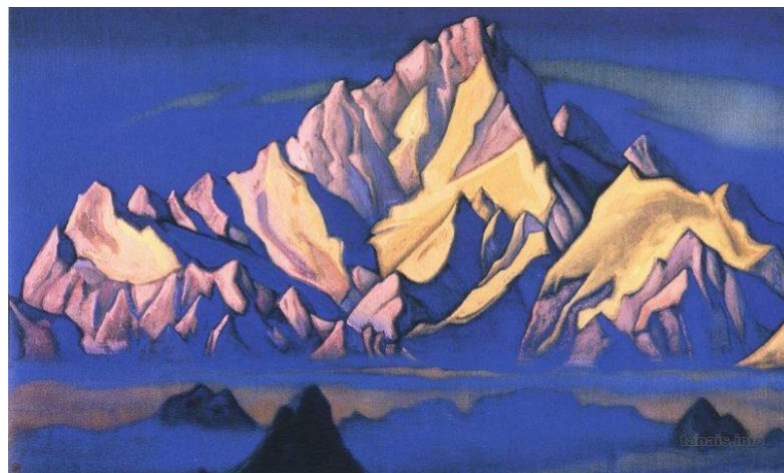
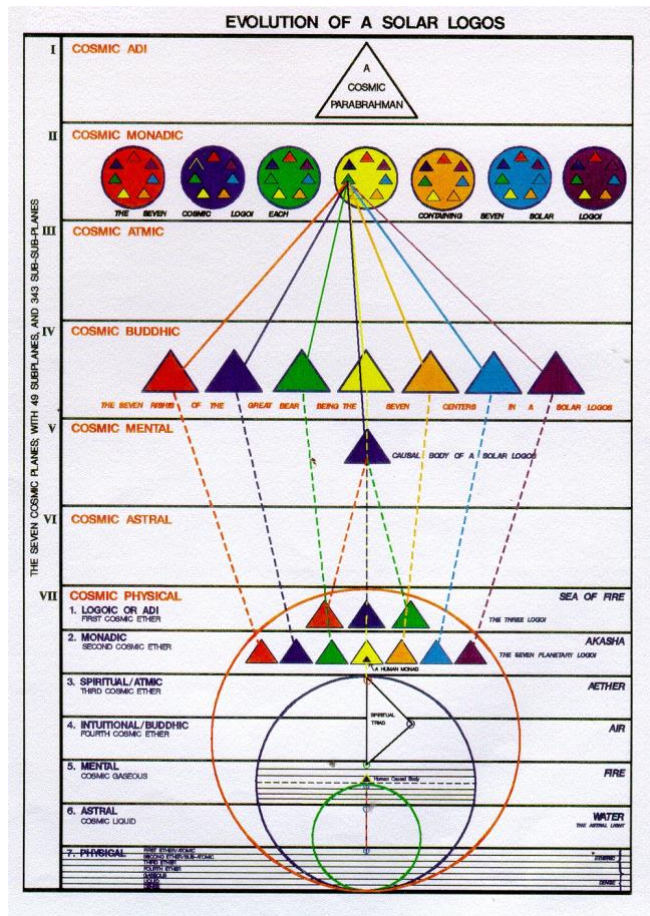
The central home of this **Hierarchy** is at Shamballa, a centre in the Gobi desert, called in the ancient books the “White Island” ... Several of the Masters in physical bodies dwell in the Himalaya mountains, in a secluded spot called *Shigatse*, far from the ways of men, but the greater number are scattered all over the world, dwelling in different places in the various

nations, unrecognised and unknown, yet forming each in His own place a focal point for the energy of the Lord of the World, and proving to His environment a distributor of the love and wisdom of the Deity. ” (A. A. Bailey, *Initiation, Human and Solar*, pp. 32-3)

“Men work with outer forms, with the tangible elements and with material factors. The “units” in the other Centres work with *substance* and not with *matter*. This is an interesting and vital distinction. The **Hierarchy** is existent upon the buddhic plane, which is the first of the cosmic ethers, and it works from there, impressing mental matter. Shamballa works on the levels of the three highest ethers whilst Humanity works primarily in the three worlds of the dense cosmic physical plane. The New Group of World Servers has in it “units of energy” who can work both with matter and with substance.”¹ (A. A. Bailey, *Telepathy and the Etheric Vehicle*, pp. 188-9)

“For ages after its immediate founding, the work was slow and discouraging. Thousands of years came and went, and races of men appeared and disappeared from the earth before it was possible to delegate even the work done by initiates of the first degree to the evolving sons of men. But in the middle of the fourth root-race, the Atlantean, an event occurred which necessitated a change, or innovation in the Hierarchical method. Certain of its members were called away to higher work elsewhere in the solar system, and this brought in, through necessity, a number of highly evolved units of the human family. In order to enable others to take Their place, the lesser members of the Hierarchy were all moved up a step, leaving vacancies among the minor posts.” (A. A. Bailey, *Initiation, Human and Solar*, pp. 33-4)

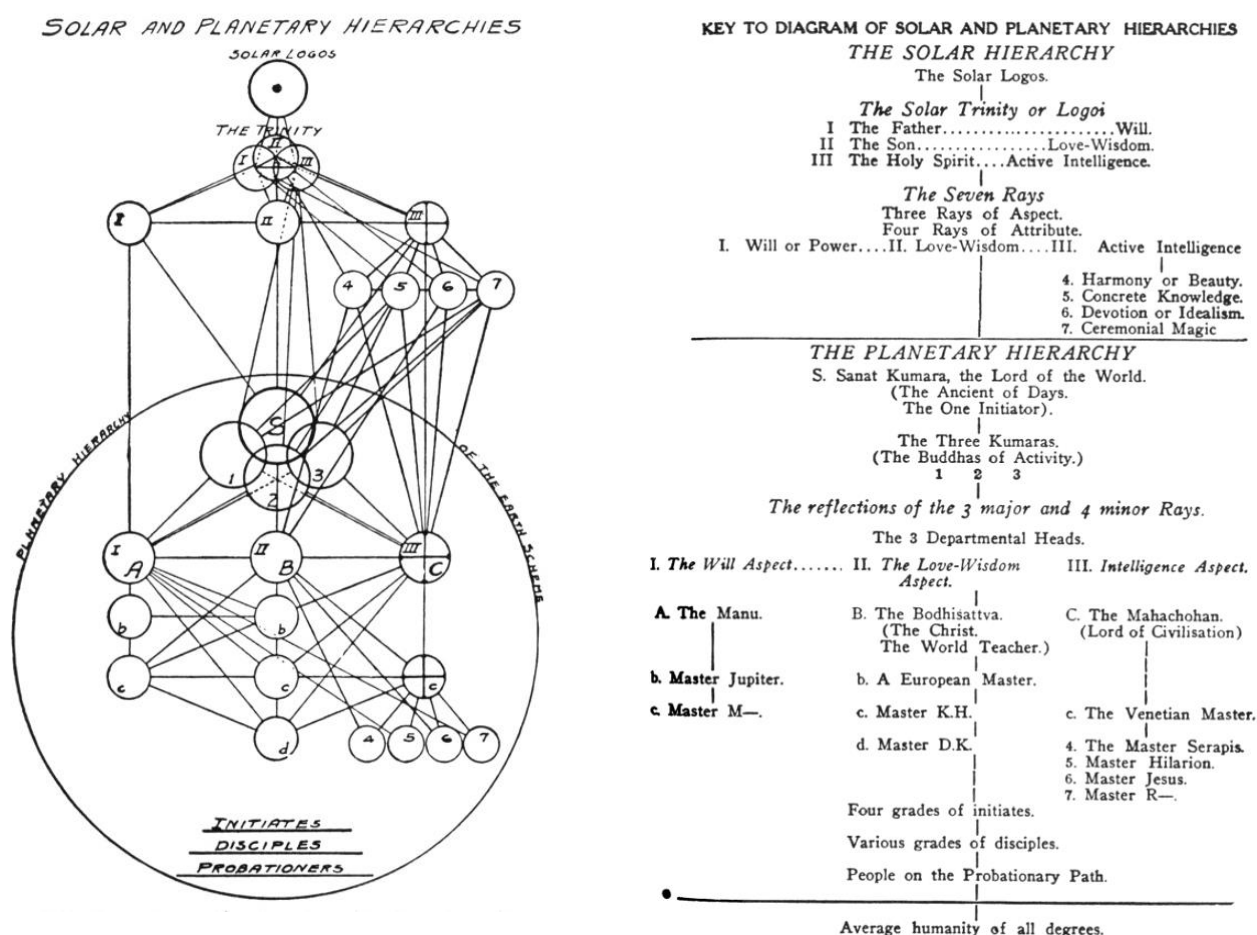
“What, in the last analysis, is this **Hierarchy**? It is a great salvaging corps of dedicated, liberated Units of Life, working in group formation with all forms and lives in all kingdoms and with all souls particularly. As the Hierarchy so works, Its emphasis is solely on the consciousness aspect



of all forms; Its present agency of salvage and of service is the mind [manas], as it expresses Itself through the minds of all humanitarians, all aspirants, all disciples (of all rays and degrees) and of all initiates; the Hierarchy also can express Itself through the medium of thought currents and ideas and through them impose Its hierarchical concepts upon the embryonic minds of the general and average public; and It also directs the educational work of all nations, so that the undeveloped masses can become—in due turn—the intelligent general public. The Hierarchy works, ... in or through three major departments, each possessing its full Personnel, and under three Great Lords... The Hierarchy works also through the seven major Ashrams and their affiliated Ashrams, and these “seven which are the forty-nine” represent in their totality the seven rays with their subrays, and are the custodians, transmitters and distributors of the seven ray energies to the seven planetary centres and—via these seven centres—to those in the fourth kingdom in nature (as they gradually unfold over the aeons) and then, via these, to the seven centres in individual man. Such is the synthesis.” (A. A. Bailey, *The Externalization of the Hierarchy*, pp. 526-7)

Organisation of the Hierarchy

Here is the *Diagram of the Solar and planetary Hierarchy*:



From A. A. Bailey, *Initiation, Human and Solar*, pp. 48-9

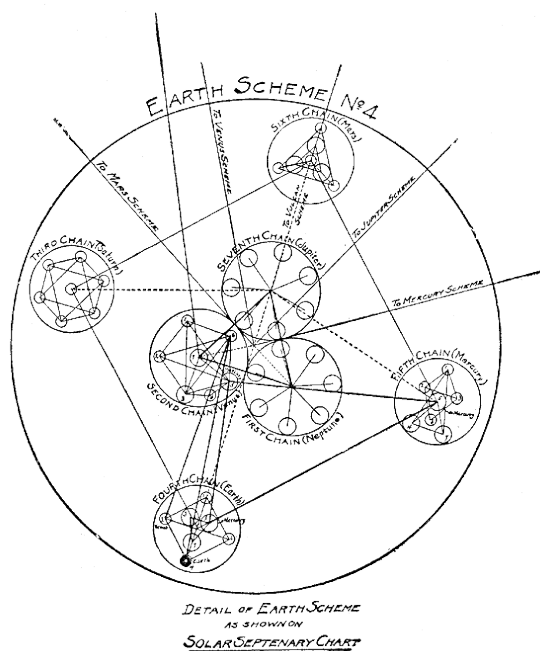
“It was decided about seventeen million years ago (the coming of the Hierarchy and the founding of Shamballa being about eighteen and a half million years ago) to have on the dense physical plane an organization and a headquarters for the [mysteries](#), and to have a band of Adepts, and Chohans² who would function in dense physical bodies and thus meet the need of the rapidly awakening humanity.” (A. A. Bailey, *A Treatise on White Magic*, pp. 379).

At the head of the **planetary Hierarchy** is **Sanat Kumara**³, the present-day exalted 'Personality' of our 'celestial Man' or planetary Logos [the solar and cosmic Consciousness guiding terrestrial evolution]:

"In the middle of the Lemurian epoch, approximately eighteen million years ago, occurred a great event which signified, among other things, the following developments:—The Planetary Logos of our earth scheme, one of the Seven Spirits before the [solar] throne, took physical incarnation, and, under the form of Sanat Kumara, the Ancient of Days, and the Lord of the World, came down to this dense physical planet and has remained with us ever since. Owing to the extreme purity of His nature, and the fact that He is (from the human standpoint) relatively sinless... He was unable to take a dense physical body such as ours, and has to function in His etheric body [the *vital body* that shapes and informs the physical body of all things]. He is the greatest of all the Avatars, or Coming Ones, for He is a direct reflection of that great Entity who lives, and breathes, and functions through all the evolutions on this planet, holding all within His aura or magnetic sphere of influence. In Him *we live and move and have our being*, and none of us can pass beyond the radius of His aura.

He is the *Great Sacrifice*, Who left the glory of the high places and for the sake of the evolving sons of men took upon Himself a physical form and was made in the likeness of man. He is the Silent Watcher, as far as our immediate humanity is concerned, although literally the Planetary Logos Himself, on the higher plane of consciousness whereon He functions, is the true *Silent Watcher* where the planetary scheme is concerned... With the *Ancient of Days* came a group of other highly evolved Entities, who represent His own individual karmic group and those Beings who are the outcome of the triple nature of the Planetary Logos. If one might so express it They [*the three Buddhas of Activity*] embody the forces emanating from the head, heart, and throat centres, and They came in with Sanat Kumara to form focal points of planetary force for the helping of the great plan for the self-conscious unfoldment of all life. Their places have gradually been filled by the *sons of men* [initiates] as they qualify, though this includes very few, until lately, from our immediate earth humanity.

Those who are now the inner group around the *Lord of the World* have been primarily recruited from the ranks of those who were initiates on the *moon chain* (the cycle of evolution preceding ours) or who have come in on certain streams of solar energy, astrologically determined, *from other planetary schemes*,



From: *A Treatise on Cosmic Fire*, p. 385

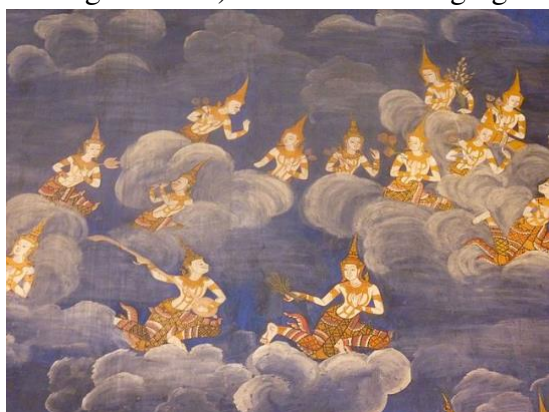
yet those who have triumphed in our own humanity are rapidly increasing in number, and hold all the minor offices beneath the central esoteric group of Six, who, with the Lord of the World, form the heart of hierarchical effort [*the seven Spirits before the Throne* of the planetary Logos: *Shamballa*].

... These central seven are as the *seven head centres* to the body corporate. They are the directing agents and the transmitters of the energy, force, purpose, and will of the Planetary Logos on His own plane. This planetary head centre works directly through the heart [Hierarchy] and throat [Humanity] centres, and thereby controls all the remaining centres. This is by way of illustration, and an attempt to show the relation of the Hierarchy to its planetary source, and also the close analogy between the method of functioning of a Planetary Logos and of man, the microcosm.

... The decision of the Planetary Logos to take a physical vehicle produced an extraordinary stimulation in the evolutionary process, and by His incarnation, and the methods of force distribution He employed, He brought about in a brief cycle of time what would otherwise have been inconceivably slow. The germ of mind in animal man was stimulated. The fourfold lower man,

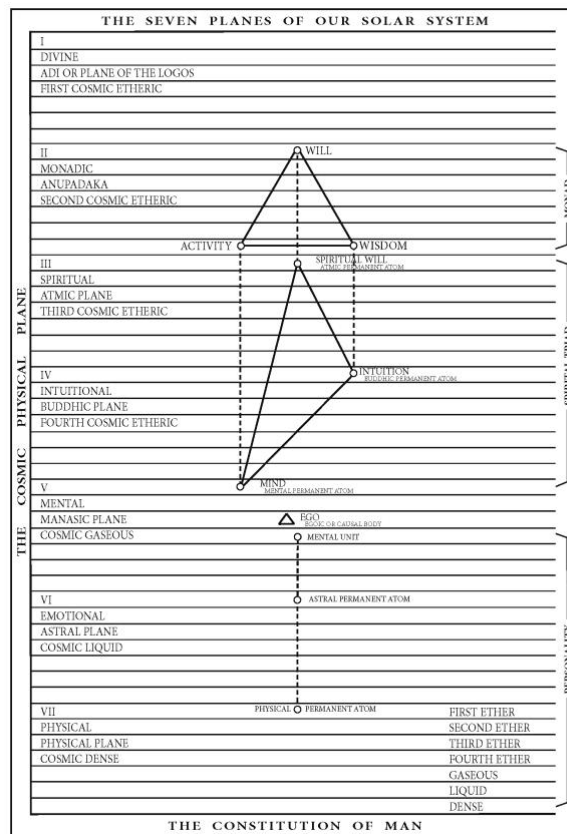
- a. The physical body in its dual capacity, etheric and dense,
- b. Vitality, life force, or prana,
- c. The astral or emotional body,
- d. The incipient germ of mind,

was co-ordinated and stimulated, and became a fit receptacle for the coming in of the self-conscious entities, those *spiritual triads* (the reflection of spiritual will, intuition, or wisdom, and higher mind) who had for long ages been waiting for just such a fitting. The fourth, or human kingdom, came thus into being, and the self-conscious, or rational unit, man, began his career.



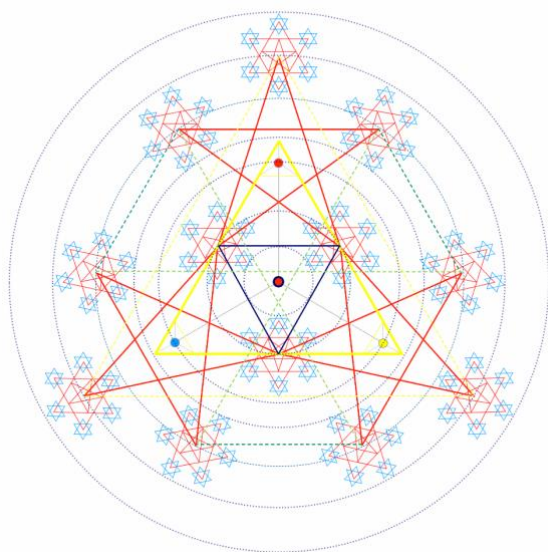
Another result of the advent of the Hierarchy was a similar, though less recognised development in all the kingdoms of nature.

... It might here be well to point out that, working as members of that Hierarchy are a great number of beings called angels by the Christian, and *devas*



by the oriental. Many of them have passed through the human stage long ages ago, and work now in the ranks of the great evolution parallel to the human, and which is called the deva evolution. This evolution comprises among other factors, the builders of the objective planet and the forces which produce, through those builders, every form familiar and unfamiliar. The devas who co-operate with the Hierarchical effort, concern themselves, therefore, with the form aspect, whilst the other members of the Hierarchy are occupied with the development of consciousness within the form.” (A. A. Bailey, *Initiation, Human and Solar*, pp. 28-32, 36)

“...at the head of affairs, controlling each unit and directing all evolution, stands the KING, the Lord of the World, Sanat Kumara, the Youth of Endless Summers, and the Fountainhead of the Will, (showing forth as Love) of the Planetary Logos.



Co-operating with Him as His advisers are three Personalities called the Pratyeka Buddhas, or the *Buddhas of Activity*. These four are the embodiment of active intelligent loving will. They are the full flowering of the intelligence, having achieved in an earlier solar system that which man is now striving to perfect. In earlier cycles in this system They began to demonstrate intelligent love, and from the standpoint of the average human being They are perfect love and perfect intelligence, though from the standpoint of that Existence [the Solar Logos] Who embraces even our planetary scheme in His body of manifestation, that love aspect is as yet but in process of developing, and the will is only embryonic. Another solar system will see the will

aspect come to fruition, as love will mature in this.

Standing around the Lord of the World, but withdrawn and esoteric, are three more Kumaras, Who make the **seven** of planetary manifestation. Their work is to us necessarily obscure. The three exoteric Buddhas, or Kumaras, are the sumtotal of activity or planetary energy, and the three esoteric Kumaras embody types of energy which as yet are not in full demonstration upon our planet. Each of these six Kumaras is a reflection of, and the distributing agent for, the energy and force of one of the six other Planetary Logoi, the remaining six spirits before the Throne. Sanat Kumara alone, in this scheme, is self-sustaining and self-sufficient, being the physical incarnation of one of the Planetary Logoi... Through each of Them passes the life force of one of the six rays, and in considering Them one might sum up Their work and position as follows:—

1. They each embody one of the six types of energy, with the Lord of the World as the synthesiser and the embodier of the perfect seventh type, our planetary type.
2. They are each distinguished by one of the six colours, with the Lord of the World showing forth the full planetary colour, these six being subsidiary.
3. Their work is therefore concerned, not only with force distribution, but with the passing into our scheme from other planetary schemes, of Egos seeking earth experience.



4. Each of Them is in direct communication with one or another of the sacred planets.
5. According to astrological conditions, and according to the turning of the planetary wheel of life, so one or another of these Kumaras will be active. The three Buddhas of Activity change from time to time, and become in turn exoteric or esoteric as the case may be. Only the King persists steadily and watchfully in active physical incarnation.

Besides these main presiding Personalities in the Council Chamber at Shamballa, there is a group of four Beings Who are the representatives upon the planet of the four Maharajas, or the four Lords of Karma in the solar system, who are specifically concerned with the evolution at the present time of the human kingdom. These four are connected with:—



1. The distribution of karma, or human destiny, as it affects individuals, and through the individuals, the groups.
2. The care and tabulation of the akashic records... They are known in the Christian world as the recording angels.
3. The participation in *solar* councils. They alone have the right during the world cycle to pass beyond the periphery of the planetary scheme, and participate in the councils of the Solar Logos. Thus They are literally planetary mediators, representing our Planetary Logos and all that concerns Him in the greater scheme of which He is but a part. Co-operating with these karmic Lords are the large groups of initiates and devas who occupy themselves with the right adjustment of:—

- a. World karma,
- b. Racial karma,
- c. National karma,
- d. Group karma,
- e. Individual karma,

and who are responsible to the Planetary Logos for the correct manipulation of those forces and building agencies which bring in the right Egos on the different rays at the correct times and seasons...

The remaining personnel of the Hierarchy is divided into three main and four subsidiary groups, each of these groups, as will be seen by reference to the appended chart, being presided over by one of Those Whom we call the three Great Lords.” (A. A. Bailey, *Initiation, Human and Solar*, pp. 38-41)

They are, in a peculiar sense, the creative agents of life as it streams forth from Shamballa into all the aspects, areas, kingdoms and fields of manifestation. This They are enabled to do through sustained, concentrated, intensive and dynamic meditation. They are necessarily a second ray group (as the second ray is the [soul] ray at present of the planetary Logos) but They focus Their meditation largely along first ray lines (which is a subray of the second ray in this solar system...) because They are the creative agents of life itself and the knowers and the custodians of the will of the planetary Logos, as it works itself out in manifestation. They are the source in reality of planetary invocation and evocation. Again, ponder on this.



The ***Hierarchy of Masters***, the Masters of the Wisdom and the Lords of Compassion. This group, which stands midway between Shamballa and Humanity, is subject to impression from Shamballa, via the Nirmanakayas, and its Members are Themselves the agents for the impression of Humanity. They embody and express the love aspect of the divine purpose; They wield, direct and control the Law of Attraction—the motivating energy which swings the Law of Evolution into activity in the three worlds. ... Basically, They work through directed meditation and each Ashram is a centre of meditation to which every disciple, initiate and Master contributes. I would have you bear this in mind and endeavour to realise, as disciples, that your meditation—both individual and group meditation—if it is of an adequate nature and quality—will be absorbed into and become part of the ashramic meditation. The theme of the hierarchical meditation is the Plan, as it embodies the divine Purpose.

... The Nirmanakayas gather Their personnel out of the **Hierarchy**, the second great planetary centre. Their relation to Shamballa is not one of affiliation, nor is it the same as that of the New Group of World Servers to the Hierarchy. Their major relationship is with the *Triangle of the Buddhas of Activity*, and it is under Their creative inspiration that They work. This stream of inspiration or of “energy flooded with creative light” is made available to the **Hierarchy** at all times and when needed for Their creative work; it is a part of that dynamic, galvanising energy which feeds the enthusiasm of the New Group of World Servers, binds them together in the One Work, and enables them to work intelligently and with creative ability.

... the hierarchical [meditative] rhythm is one of tremendous potency—a potency so great that it penetrates beyond the hierarchical ring-pass-not.

The effect of that reflective vibration is both vertical and horizontal, and this wide diffusion has led to the formation of that major group of contemplatives, the Nirmanakayas; They focus the hierarchical invocative appeal and (to quote the *Old Commentary*) “put it into the musical form which will please the ear of the One Who dwells in the highest plane”. They then transfer the focussed received energies—after due reflection and contemplation—to Shamballa. One of Their functions is to relate the invocative appeal of the Hierarchy to karmic law, and thus determine “in the deep silence of Their united work” what can be possible because it does not infringe upon karmic intention, and what is not yet possible in time and space—those two major

factors which are governed by karmic law. They have to bear in mind that the time has not yet come and “the karmic era cannot yet demand that demanded good become accomplished good”. The members of this group are also transmitters to the Hierarchy of the response evoked from Shamballa. They are constantly in touch with the Council Chamber at Shamballa. Just as the Hierarchy—in this present cycle of world endeavour—is working through the New Group of World Servers, so Shamballa is carrying out its intentions (as far as humanity is concerned) through this group of Nirmanakayas. This all connotes a great centralisation of the work in connection with the reappearance of the Christ.” (A. A. Bailey, *Discipleship in the New Age II*, pp. 210-1, 201-2, 206)

The second Group of the **planetary Hierarchy**, the “Agents of the Plan”, thus receive the “impressions” from Shamballa through the Nirmanakayas, and *execute the Plan* through the [new Group of world servers](#) and the intellectuals of good will amongst humanity.

“...Each Ashram can approach the Nirmanakayas as a group at stated periods for which due preparation is made; only the entire group of Ashrams, the **Hierarchy** as a whole, can approach Shamballa.” (A. A. Bailey, *Discipleship in the New Age II*, p. 217)

“Few even of the Members of the **Hierarchy** are conscious of the impact of force from extra-solar centres or reservoirs of spiritual force. Only the group of Contemplatives in the **Hierarchy** which are given the exoteric name of Nirmanakayas are responsive to Their influence in any conscious manner and then only when that influence has been stepped down by certain powerful agencies in Shamballa.” (A. A. Bailey, *The Externalization of the Hierarchy*, p. 156)

“...the four major goals which the *Workers with the Plan* have set Themselves...:

1. The first aim and the primary aim is to establish, through the medium of humanity, an outpost of the Consciousness of God in the solar system. This is a correspondence, macrocosmically understood, of the relationship existing between a Master and His group of disciples. This, if pondered on, may serve as a clue to the significance of our planetary work.



2. To found upon earth (as has already been indicated) a powerhouse of such potency and a focal point of such energy that humanity—as a whole—can be a factor in the solar system, bringing about changes and events of a unique nature in the planetary life and lives (and therefore in the system itself) and inducing an interstellar activity.

3. To develop a station of light, through the medium of the fourth kingdom in nature, which will serve not only the planet, and not only our particular solar system, but the seven systems of which ours is one. This question of light, bound up as it is with the colours of the seven rays, is as yet an embryo science, and it would be useless for us to enlarge upon it here.

4. To set up a magnetic centre in the universe, in which the human kingdom and the kingdom of souls will, united or at-oned, be the point of most intense power, and which will serve the developed Lives within the

radius of the radiance of the One About Whom Naught May Be Said.

In these four statements we have sought to express the wider possibility or occasion as the **Hierarchy** sees it today. Their plans and purposes are destined and oriented to a larger accomplishment than it is as yet possible for normal man to vision. If it were not so, the unfoldment of the soul in man would be a prime objective in the planet. But this is *not* the case.

It may be so from the point of view of man himself, considering him as an essentially separable and identifiable unity in the great cosmic scheme. But it is not so for that greater whole of which humanity is only a part. Those great Sons of God, Who have passed beyond the point of development of those Masters Who work entirely with the human kingdom, have plans of a still vaster and broader sweep, and Their objectives involve humanity only as an item in the Plan of the great Life “*in Whom we live and move and have our being*”.

One may ask (and rightly ask) wherein all this information can be of use to us in the midst of a troubled and bewildered world. For obvious reasons, a vision of the Plan, nebulous as it must necessarily be, confers a sense of proportion and also of stability. It leads to a much-needed re-adjustment of values, indicating as it does, that there is *purpose* and objective behind all the difficult happenings of daily life. It broadens and widens and expands the consciousness, as we study the great volume of the planetary life, embracing as it does the detail and the finished structure, the item man, and the entire life of the planet, with their relation to the greater Whole. This is of far more importance than the minute detail of the human being's individual capacity to grasp his own immediate place within the larger picture... It is not, however, a profitless task for the disciples and aspirants to catch the dim outline of that structure, that purpose and that destiny which will result from the consummation and fruition of the Plan on earth. It need evoke no sense of futility or of endless striving or of an almost permanent struggle. Given the fact of the finiteness of man and of his life, given the tremendous periphery of the cosmos and the minute nature of our planet, given the vastness of the universe and the realisation that it is but one of countless (literally countless) greater and smaller universes, yet there is present in men and upon our planet a factor and a quality which can enable all these facts to be seen and realised as parts in a whole, and which permits man (escaping, as he can, from his human self-consciousness) to expand his sense of awareness and identity so that the form aspects of life offer no barrier to his all-embracing spirit. It is of use also to write these words and to deal with these ideas, for there are those now coming into incarnation who can and will understand, when present readers are dead and gone [written in 1935-1939]. I and you will pass on to other work, but there will be those on earth who can vision the Plan with clarity, and whose vision will be far more inclusive and comprehending than ours. Vision is of the nature of divinity. Expansion is a vital power and prerogative of Deity. Therefore let us struggle to grasp what is possible at our particular stage of development, and leave eternity to reveal its hidden secrets.” (A. A. Bailey, *Esoteric Psychology II*, pp. 217-220)

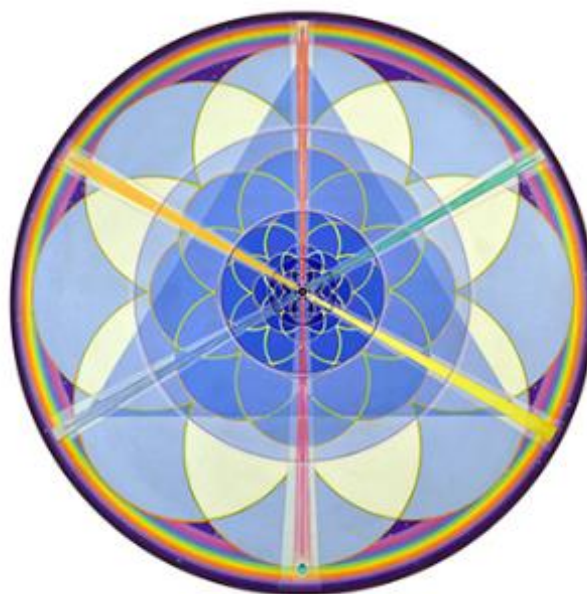
In short there are “two Lodges within the greater body:—

- a. The — Lodge, comprised of initiates above the fifth initiation, and a group of devas or angels.
- b. The Blue Lodge, comprised of all initiates of the third, fourth, and fifth initiations.

Below these come a large group of initiates of the first and second initiations, and then the disciples of every grade. The disciples are considered as affiliated with the Lodge, but not as literally members of it. Finally come those who are on probation, and who hope through strenuous effort to achieve affiliation.

From another point of view we can consider the Lodge members as existing in seven groups, each group representing one type of the sevenfold planetary energy emanating from the Planetary Logos. The triple division has first been given, as ever in evolution you have the major three (manifesting through the three departments) and then the seven, these seven showing again as a triple differentiation and a septenary. Students must bear in mind that all that is herein imparted concerns the work of the Hierarchy in connection with the fourth or human kingdom, and refers especially to those Masters Who work in connection with humanity. Were the deva evolution being dealt with, the entire tabulation and division would have to differ from this.

... The workers, or adepts, concerned with the evolution of the human family, comprise sixty-three, if the three great Lords are counted in making the nine times seven necessary for the work. Of these forty-nine work exoterically, if it might be so expressed, and fourteen esoterically, being more concerned with the subjective manifestation. Not many of Their names are known to the public, nor would it be wise in many cases to reveal Who They are, where They dwell, and what is Their particular sphere of activity. A very small minority, through group karma and a willingness thus to sacrifice Themselves, have come before the public eye during the past one hundred years, and therefore concerning these, certain information may be given out.” (A. A. Bailey, *Initiation, Human and Solar*, pp. 50-1)



“The work of the Manu.

The **Manu** presides over group one [the First Department of the Hierarchy]. He is called *Vaivasvata* Manu, and is the Manu of the *fifth root-race*. He is the *ideal man or thinker*, and sets the type for our Aryan race, having presided over its destinies since its inception nearly one hundred thousand years ago... [beginning of the 5th sub-race of the 5th root-race]

1st Root: Polarian 150-70 M					
1 st subrace	2nd Root: Hyperborean 79-27 M				
2 nd subrace	1 st subrace				
3 rd subrace	2 nd subrace	3rd Root: Lemurian 38-4 M			
4 th subrace	3 rd subrace	1 st subrace			
5 th subrace	4 th subrace	2 nd subrace			
6 th subrace	5 th subrace	3 rd subrace	4th Root: Atlantean 18.5 M-9,564 BC		
7 th subrace	6 th subrace	4 th subrace	1 st Gibborim		
	7 th subrace	5 th subrace	2 nd Tlavatli		
		6 th subrace	3 rd Toltecs		
		7 th subrace	4 th Turanians	5th Root: Aryan 4 M-425,000 CE	
			5 th Seed 5 th RR	1 st Hindu-Persian	
			6 th Etruscan?	2 nd Egyptian-Mayan	
			7 th Mongolian	3 rd Arab-Semite	
				4 th Celtic-Latin	
				5 th Teutonic	6th Root 25,000 CE-10 M
				6 th Seed 6 th RR	1 st Brazil
				7 th subrace	2 nd subrace
					3 rd subrace
					4 th subrace
					5 th subrace
					6 th subrace
					7 th subrace
					7th Root
					1 st subrace
					2 nd subrace
					3 rd subrace
					4 th subrace
					5 th subrace
					6 th subrace
					7 th subrace

TIMELINE OF THE ROOTRACES & SUBRACES

Chronological hypothesis of the Root Races and sub-races according to the Secret Doctrine

The Manu, or the prototype of the fourth root-race, works in close co-operation with Him, and has His centre of influence in China... Vaivasvata Manu has His dwelling place in the Himalaya mountains, and has gathered around Him at Shigatse some of those immediately connected with Aryan affairs in India, Europe and America, and those who will later be concerned with the coming sixth root-race. The plans are prepared for ages ahead, centres of energy are formed thousands of years before they will be required, and in the wise fore-knowledge of these Divine

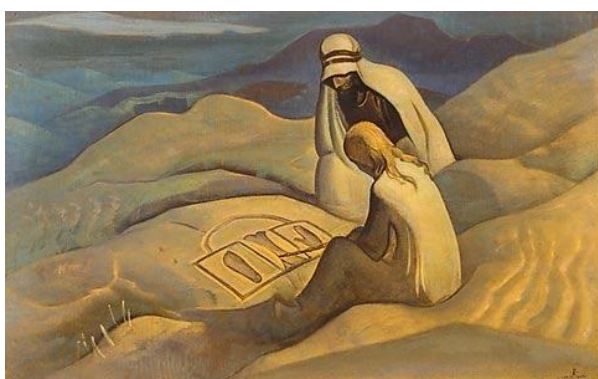
Men nothing is left to sudden eventuation, but all moves in ordered cycles and under rule and law, though within karmic limitations.

The work of the Manu is largely concerned with government, with planetary politics, and with the founding, direction, and dissolution of racial types and forms. To Him is committed the will and purpose [1st Ray] of the Planetary Logos. He knows what is the immediate objective for this cycle of evolution over which He has to preside, and His work concerns itself with making that will an accomplished fact. He works in closer co-operation with the building devas than does His Brother, the Christ, for to Him is given the work of setting the race type, of segregating the groups out of which races will develop, of manipulating the forces which move the earth's crust, of raising and lowering continents, of directing the minds of statesmen everywhere so that racial government will proceed as desired, and conditions be brought about which will produce those needed for the fostering of any particular type...

The energy which flows through Him emanates from the head centre of the Planetary Logos, passing to Him through the brain of Sanat Kumara, Who focalises all the planetary energy within Himself. He works by the means of a dynamic meditation, conducted within the head centre, and produces His results through His perfect realisation of that which has to be accomplished, through a power to visualise that which must be done to bring about accomplishment, and through a capacity to transmit creative and destructive energy to those who are His assistants. And all this is brought about through the power of the enunciated sound.

The work of the World Teacher, the Christ.

Group two has the **World Teacher** for its presiding Head. He is that Great Being Whom the Christian calls the *Christ*; He is known also in the Orient as the *Bodhisattva*, and as the *Lord Maitreya*, and is the One looked for by the devout Mohammedan, under the name of the *Imam*



Mahdi. He it is Who has presided over the destinies of life since about 600 B.C. and He it is Who has come out among men before, and Who is again looked for. He is the great Lord of Love and of Compassion, just as his predecessor, the *Buddha*, was the *Lord of Wisdom*. Through Him flows the energy of the second aspect, reaching Him direct from the heart centre of the Planetary Logos via the heart of Sanat Kumara. He works by means of a meditation centred within the heart. He is the

World Teacher, the Master of the Masters, and the Instructor of the Angels, and to Him is committed the guidance of the spiritual destinies of men, and the development of the realisation within each human being that he is a child of God and a son of the Most High.

Just as the Manu is occupied with the providing of the type and forms through which consciousness can evolve and gather experience, thus making existence in its deepest sense possible, so the World Teacher directs that indwelling consciousness in its life or spirit aspect, seeking to energise it within the form so that, in due course of time, that form can be discarded and the liberated spirit return whence it came.

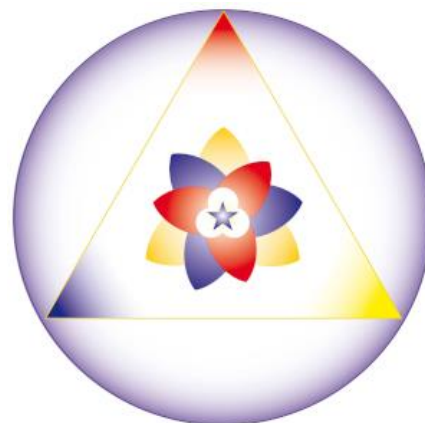
The work of the Lord of Civilisation, the Mahachohan.

Group three has as its Head the **Mahachohan**. His rule over the group persists for a longer period than that of His two Brothers, and He may hold office for the term of several root-races. He is the sumtotal of the intelligence aspect. The present Mahachohan is not the original one Who held the office at the founding of the **Hierarchy** in Lemurian days—it was then held by one of the Kumaras, or Lords of the Flame, Who came into incarnation with Sanat Kumara...

His work concerns itself with the fostering and strengthening of that relation between spirit and matter, life and form, the self and the not-self, which results in what we call **civilisation**. He manipulates the forces of nature, and is largely the emanating source of electrical energy as we know it. Being the reflection of the third, or creative aspect, energy from the Planetary Logos flows to Him from the throat centre, and He it is Who in many ways makes the work of His Brothers possible. Their plans and desires are submitted to Him, and through Him pass the instructions to a large number of the deva agents.

Thus you have **Will, Love, and Intelligence** represented in these *three great Lords*; you have the self, the not-self, and the relation between synthesised in the unity of manifestation; you have racial government, religion and civilisation forming a coherent whole, and you have physical manifestation, the love or desire aspect, and the mind of the Planetary Logos working out into objectivity. The closest co-operation and unity exists between these three Personalities, and every move and plan and event exists in Their united foreknowledge. They are in daily touch with the Lord of the World at Shamballa, and the entire guidance of affairs rests in Their hands, and in those of the Manu of the fourth root-race. The World Teacher holds office in connection with both the fourth and fifth root-races.

Each of these departmental heads directs a number of subsidiary offices, and the department of the **Mahachohan** is divided into five divisions, so as to take in the four lesser aspects of Hierarchical rule.



Under the **Manu** work the regents of the different world divisions, such as, for instance, the *Master Jupiter*, the oldest of the Masters now working in physical bodies for humanity, Who is the regent for India, and the *Master Rakoczi*, Who is the regent for Europe and America. It must be remembered here that though the Master R., for instance, belongs to the seventh ray, and thus comes under the department of energy of the Mahachohan, yet in Hierarchical work He may and does hold office temporarily under the Manu. These regents hold in Their hands the reins of government for continents and nations, thus guiding, even if unknown, their destinies; They impress and inspire statesmen and rulers; They pour forth mental energy on governing groups, thus bringing about the desired results wherever co-operation and receptive intuition can be found amongst the thinkers.

The **World Teacher** presides over the destiny of the great religions through the medium of a group of Masters and initiates Who direct the activities of these different schools of thought. The Master **Jesus**, the inspirer and director of the Christian Churches everywhere, though an adept on the sixth ray under the department of the Mahachohan, works at present under the Christ for the welfare of Christianity; other Masters hold similar posts in relation to the great oriental faiths, and the various occidental schools of thought.

In the department of the **Mahachohan** a large number of Masters, in fivefold division, work in connection with the deva evolution, and with the intelligence aspect in man. Their divisions follow those of the four minor rays of attribute:—

1. The ray of harmony or beauty.
2. The ray of concrete science or knowledge.
3. The ray of devotion or abstract idealism.
4. The ray of ceremonial law or magic,

just as the three departmental heads represent the three major rays of:—

- I. Will or power.

II. Love or wisdom.

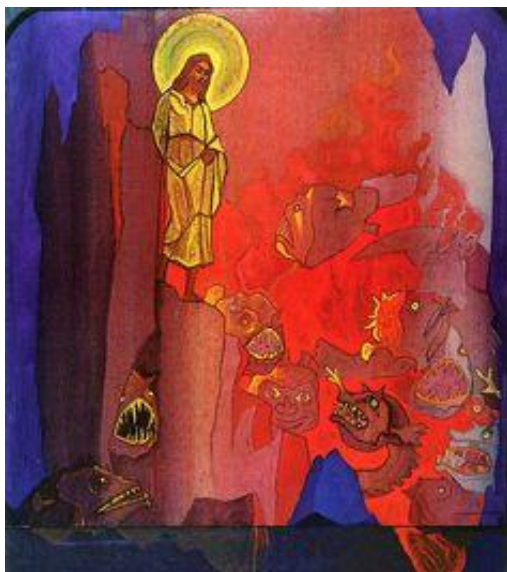
III. Active intelligence, or adaptability.

The four rays or attributes of mind, with the third ray of intelligence, as synthesised by the Mahachohan, make up the sumtotal of the *fifth principle* of mind or manas.” (A. A. Bailey, *Initiation, Human and Solar*, pp. 42-7 – see also in the text from page 54: *Certain Masters and Their Work*)



Yesterday and today

“Many great Beings from planetary and solar sources, and once or twice from cosmic sources, have at times lent Their aid and dwelt briefly upon our planet. By the energy which flowed through Them, and by Their profound wisdom and experience, *They stimulated earth's evolutions* and brought the purposes of the Planetary Logos so much the nearer to completion. Then They passed on, and Their places were taken by those among the members of the **Hierarchy** Who were willing to undergo a specific *training* and *expansion of consciousness*. In turn these adepts and Masters had Their places filled by initiates, and thus constantly has there been opportunity for disciples and highly evolved men and women to pass into the ranks of the Hierarchy, and thus constantly has there been a circulation of new life and blood, and the coming in of those who belong to a particular period or age.



Some of the great names during the later periods are known to history, such as Shri Sankaracharya⁵, Vyasa⁶, Mahomet, Jesus of Nazareth, and Krishna, down to those lesser initiates, Paul of Tarsus, Luther, and certain of the outstanding lights in European history. Always have these men and women been agents for the carrying out of race purpose, for the bringing about of group conditions, and for the furthering of the evolution of humanity. Sometimes they have appeared as beneficent forces, bringing peace and contentment with them. More often have they come as agents of destruction, breaking up the old forms of religion and of government in order that the life within the rapidly crystallising form might be

set free and build for itself a newer and a better vehicle.” (A. A. Bailey, *Initiation, Human and Solar*, pp. 37-8)

“...this **Hierarchy** is composed of those Who have triumphed over matter, and Who have achieved the goal by the very self-same steps that individuals tread today. These spiritual personalities, these adepts and Masters, have wrestled and fought for victory and mastery upon the physical plane, and struggled with the miasmas, the fogs, the dangers, the troubles, the sorrows and pains of everyday living. They have trodden every step of the path of suffering, have undergone every experience, have surmounted every difficulty, and have won out. These Elder Brothers of the race have one and all undergone the crucifixion of the personal self, and know that utter renunciation of all which is the lot of every aspirant at this time. There is no phase of agony, no rending sacrifice, no Via Dolorosa that They have not in Their time trodden, and herein lies Their right to serve, and the strength of the method of Their appeal. Knowing the quintessence of pain, knowing the depth of sin and of suffering, Their methods can be exquisitely measured to the individual need...

These Elder Brothers of humanity are characterised by a *love* which endures, and which acts ever for the good of the group; by a *knowledge* which has been gained through millennia of lives, in which They have worked Their way from the bottom of life and of evolution well nigh to the top; by an *experience* which is based on time itself and a multiplicity of personality reactions and interactions; by a *courage* which is the result of that experience, and which, having itself been produced by ages of endeavour, failure, and renewed endeavour, and having in the long run led to triumph, can now be placed at the service of the race; by a *purpose* which is enlightened and intelligent, and which is co-operative, adjusting itself to the group and hierarchical plan and thus fitting in with the purpose of the Planetary Logos; and finally They are distinguished by a knowledge of the *power of sound*. ... Knowing the plan so well, and having clear, illuminated vision, They can bend Their will unflinchingly and unswervingly to the great work of creation by the power of sound. This leads to Their silence where the average man would speak, and Their speaking where the average man is silent. (A. A. Bailey, *Initiation, Human and Solar*, pp. 24-5)

The Relationship between the **Hierarchy** as a whole and mankind can be summed up with the idea of the realisation of certain “[Great Approaches](#)”.

“By means of these Approaches, humanity has been brought (in consciousness) increasingly nearer to the spiritual centres of love and life and has been stimulated to make spiritual progress, to awaken to the light within, to unfold the Christ consciousness and to find the Path of Light which leads to divinity. This steady trend towards increasing relationship has focussed itself



throughout the historical record by means of certain great registered revelations—the result of these Approaches. Always in moments of crisis and tension, the cry of humanity has evoked response from the **Hierarchy** which has come, sometimes rapidly, sometimes more slowly, but always inevitably. In modern history, two such Approaches are recognised as existing on a broad human scale, i.e., the one which focussed through the coming of the **Buddha** to the Eastern civilisation and that which focussed through the **Christ**, coming to the West. Another Great Approach is now at hand but its date is dependent upon the activity of the New Group of World Servers and the spiritual tension which they can achieve.” (A. A. Bailey, *The Externalization of the Hierarchy*, p. 394)

How many distortions have been accumulated about the Truth! How many principles have been destroyed! They will ask, “On what is the Stronghold of the Brotherhood built?” Answer, “On the doctrine of the heart, the doctrine of labor, the doctrine of beauty, the doctrine of evolution, the doctrine of tension—the most vital doctrine.”

*We are Votaries of the Infinite. Where the all-encompassing striving cannot penetrate, the Brothers of Humanity do not affirm their manifestation. We suffuse space with the flux of evolution. The Brothers of Humanity willingly renounce Paranirvana for the affirmation of human evolution, in their desire to lay the foundation for a better step. The goal is not divested of labor. The goal is not divested of sacrifice. Thus, point out the closeness of the manifestation of **Maitreya**. According to the prophecy of the most ancient Teachers, when humanity loses the foundation of the Teaching and sinks into obscurity, the Epoch of Maitreya will take place. Our pillars of the foundation are sent to regenerate the spirit-understanding. Thus say to those who do not understand, thus point out the doctrine of the Heart!*

(Hierarchy § 1)



¹ “Esoterically speaking, the word “matter” or material is given to all forms in the three worlds; and though the average human being finds it difficult to understand that the medium in which the mental processes take place and that of which all thoughtforms are made is *matter* from the spiritual angle, yet so it is; *substance*—technically speaking and esoterically understood—is in reality cosmic etheric matter, or that of which the four higher planes of our seven planes are composed. From the human angle, ability to work with and in the cosmic etheric substance demonstrates first of all when the abstract mind awakens and begins to impress the concrete mind; an intuition is an idea clothed in etheric substance, and the moment a man becomes responsive to those ideas, he can begin to master the techniques of etheric control. All this is, in reality, an aspect of the great creative process: ideas, emanating from the buddhic levels of being (the first or lowest cosmic ether) must be clothed in matter of the abstract levels of the mental plane; then they must be clothed in matter of the concrete mental plane; later, with desire matter, and finally (if they live so long) they assume physical form. An idea which comes from the intuitive levels of the divine consciousness is a true idea. It is noted or apprehended by the man who has, within his equipment, substance of the same quality—for it is the magnetic relation between the man and the idea which has made its apprehension possible. In the great creative process he must give form to the idea, if he possibly can, and thus the creative artist or the creative humanitarian comes into being and the divine creative intention is thereby aided.” (A. A. Bailey, *Telepathy and the Etheric Vehicle*, pp. 189-190)

² **CHOHAN** (*Tib.*) – “Lord” or “Master”; a chief; thus *Dhyān-Chohan* would answer to “Chief of the Dhyanis”, or celestial Lights—which in English would be translated Archangels. (From H. P. Blavatsky, *Theosophical Glossary* – TG)

³ “Sanat Kumara is not the personality of the planetary Logos, for personality as you understand it is not existent in His case. It is not the soul of the planetary Logos, because that soul is the *anima mundi* and the soul of all forms in all kingdoms. Sanat Kumara, the Eternal Youth, can be seen by Those Who have the right, presiding, for instance, over the Council in Shamballa, yet at the same time He is present as the life and the informing intelligence upon and within our planet.” (A. A. Bailey, *The Externalization of the Hierarchy*, p. 676)

SANAT KUMĀRA (*Sk.*). The most prominent of the seven Kumāras, the Vaidhātṛa, the first of which are called Sanaka, Sananda, Sanātana and Sanat Kumāra; which names are all significant qualifications of the degrees of human intellect. (TG)

⁴ “*Nirmanakaya* is a name made up of two words which signify “having no body”, and has no reference whatever to moral qualities. It is a state of consciousness. The great Teachers of Nirvanic spheres are called by this name.” (A. A. Bailey, *A Treatise on Cosmic Fire*, p. 780, footnote 57)

“Beyond this state of samadhi lies the dream state of the Nirmanakayas and of the Buddhas, and so on up the scale of hierarchical life till that great Dreamer is known, who is the One, the only Narayana, the Lord of the World Himself, the Ancient of Days, our Planetary Logos.” (A. A. Bailey, *The Light of the Soul*, p. 87)

⁵ **SRI SANKARĀCHARYA** (*Sk.*). The great religious reformer of India, and teacher of the Vedānta philosophy—the greatest of all such teachers, regarded by the *Advaitas* (Non-dualists) as an incarnation of Siva and a worker of miracles. He established many *mathams* (monasteries), and founded the most learned sect among Brahmans, called the Smārtava. The legends about him are as numerous as his philosophical writings. At the age of thirty-two he went to Kashmir, and reaching Kēdāranāth in the Himalayas, entered a cave alone, whence he never returned. His followers claim that he did not die, but only retired from the world. (TG)

⁶ **VYĀSA** (*Sk.*). Lit., *one who expands or amplifies*; an interpreter, or rather a revealer; for that which he explains, interprets and amplifies is a *mystery* to the profane. This term was applied in days of old to the highest Gurus in India. There were many Vyāsas in Aryavarta; one was the compiler and arranger of the *Vedas*; another, the author of the *Mahābhārata*—the *twenty-eighth Vyāsa* or *revealer in the order of succession*—and the last one of note was the author of *Uttara Mīmāṃsā*, the sixth school or system of Indian philosophy. He was also the founder of the Vedānta system. His date, as assigned by Orientalists (see Elphinstone, Cowell, etc.), is 1,400 B.C., but this date is certainly too recent. The *Purānas* mention only twenty-eight Vyāsas, who at various ages descended to the earth to promulgate Vedic truths—but there were many more. (TG)